

Upcoming Shows:

Kalamazoo Institute of Art – 57th Annual Fair

Kalamazoo, Michigan (Bronson Park)

Saturday, June 5th 2010 (one day only – 9am to 5pm)

Crocker Park Fine Art Fair

Westlake, Ohio (suburban west Cleveland, on Main St.)

June 12th & 13th, 2010 • www.theguild.org/art_fair_crocker_park.html

Crosby Festival of the Arts

Toledo (Ohio) Botanical Gardens

June 25th & 26th, 2010 • www.toledogarden.org/content/crosby/shows

Bristol Renaissance Faire, Wisconsin

July 10th – September 6th (Weekends only, plus Labor Day)

Gems of Antiquity - 542 The Buttery • visit: www.renfaire.com for discount tickets

Bring any of my jewelry for a free cleaning and inspection.

Only here can you select from my loose gems to put in one of my settings.

Fine Arts Festival

Walnut Creek, California (on Locust St.)

Sept. 24-26, 2010 • www.pacificfinearts.com

Autumn Festival

Villa Park, Illinois, at the Odeum (West Chicago suburb)

Nov. 18th-21st, 2010 – visit: www.hpifestivals.com for hours and \$1 off coupons

Paul Hapip Jewelry

Gems of Antiquity

P.O. Box 329 • Twin Lakes, WI 53181

Phone: 262-537-2884

Look inside
for original
DRAWINGS
of this years
NEW DESIGNS!

Please check
my website for
additional details
and new fall
shows!

Gems of Antiquity

Paul Hapip Jewelry

Spring 2010



NEW GEMSTONES IN MY COLLECTION

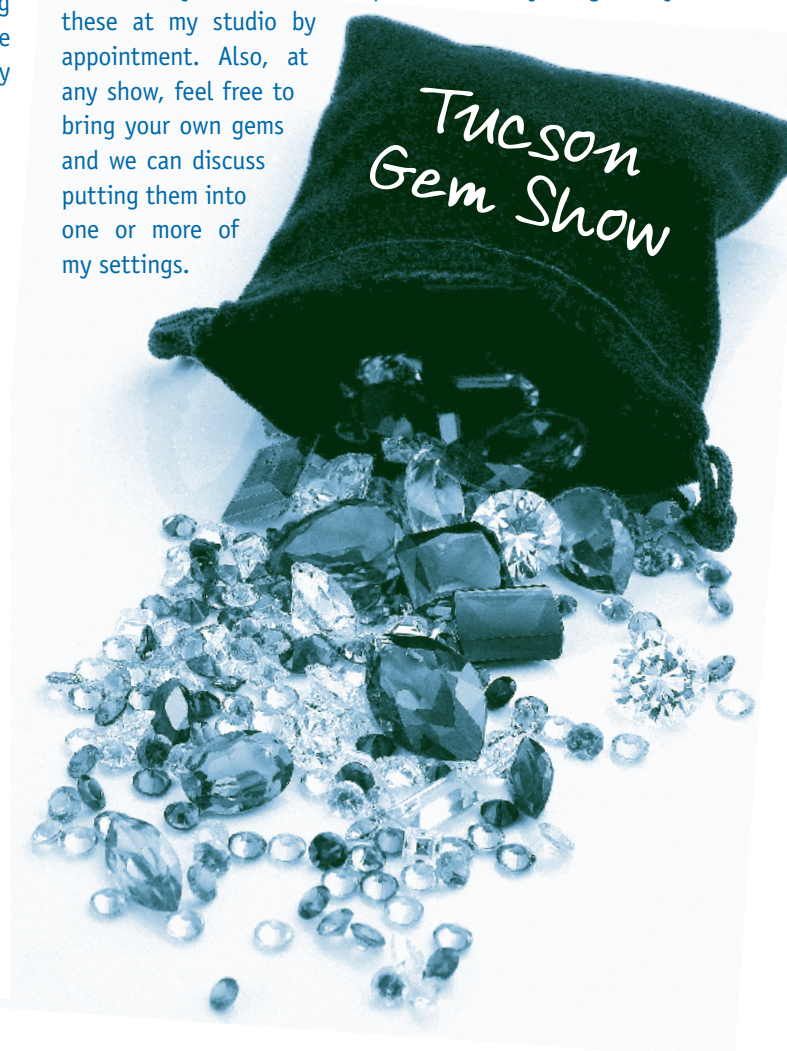
I returned to the largest gem show in the world this past February. It's in Tucson, Arizona and now occupies 44 hotels, expo centers and tents the size of half a city block! 10,000 gem dealers from all over the world descend on Tucson to sell to manufacturing and retail jewelers. Competition is high, so that one can find great values if you diligently shop the shows. I attended eight of the best shows in four days. You are continually looking at various qualities of gemstones, evaluating quality versus the asking price, and then vigorously discussing the price with the seller. This is repeated hundreds of times each day. By the end my mental faculties are worn out!

My significant purchases in Tucson this year were:

- I **Sherry Topaz** (yellow-orange) from Brazil – I last had this in stock about five years ago.
- II **Sapphire** – some amazing blues and also pinks, oranges, whites, bi-color and color change (blue to purple or purple to violet).
- III **Ruby** (deep red) and **Star Ruby**
- IV **Garnets** – Tsavorite (vibrant green) & color change (purple to pink)
- V Wonderful **Tanzanites** – first significant price drop in at least a decade
- VI **Pink Tourmaline**
- VII **Chrome Diopside** – up to 1 1/2 carats
- VIII Very rare gems:
 - Sapphirine** (deep blue green, up to 1 carat)
 - Dunilite** – (yellow, discovered by my friend Dunil Gunasekera)
 - Taaffeite** – (lilac)

Most of these I have in extremely short supply; in other years I have had none to offer. Lastly, in gems I regularly offer, I was able to restock several in good qualities and decent quantities: Aquamarine, Citrine Quartz, Iolite, Amethyst, Peridot and Chrome ("Ant Hill") Garnet.

At the Renaissance Fair only I'll have a good selection of loose gems from which you can choose to put in one of my designs; or you can see these at my studio by appointment. Also, at any show, feel free to bring your own gems and we can discuss putting them into one or more of my settings.



MY NEW DESIGNS for 2010

It's been another fruitful year of designing jewelry. It's always challenging to come up with new designs. I was going to take the year off as I've come up with lots of designs in the past decade (about 40). It's a big enough job to keep these in stock, without adding more.

But this year these designs leapt at me

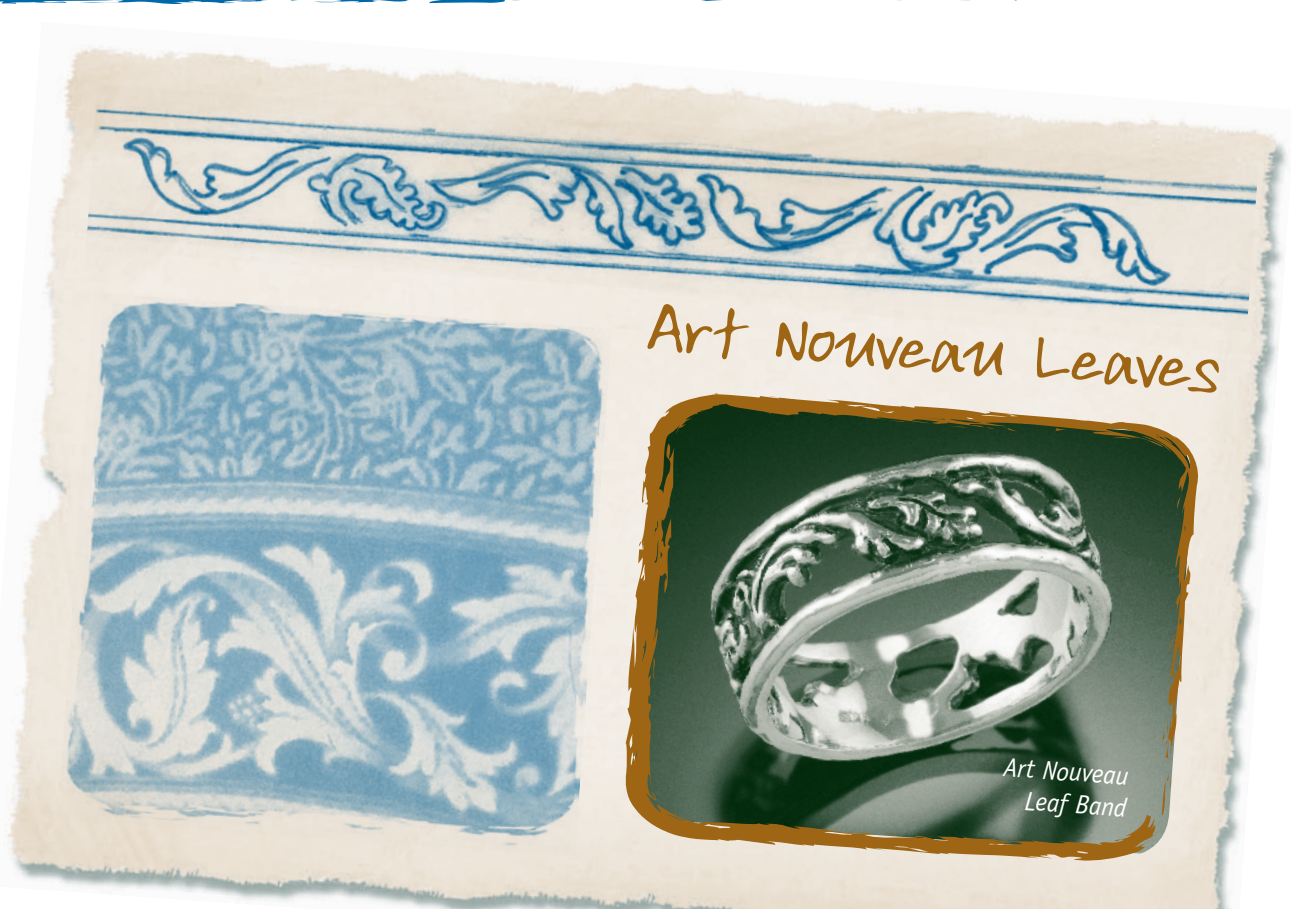
I Last Summer the Poppy flower idea came into my consciousness one day in a daydream... one on each side, petals curving upward & inward, long stems of the flower becoming prongs, no oxidation – just the contrast of unpolished & polished gold in the petals & their edges.

II Last Spring a client named Holly wanted a ring with the leaf of her name – thus came into being the Holly Leaf & Berries ring. I love the curving of the leaf in this ring.

III Lastly Shannon, the glassblower at the Renaissance Faire, wanted a band with Agapantha Leaves, an elongated leaf that curves and folds in upon itself. I declined the idea at the time, but that Fall I attended a conference in which the carpet of the ballroom was all these fanciful swirly Art Nouveau leaves. I took 10 photos with my camera, printed them out & used them as inspiration for my Art Nouveau Leaf Band.

The past month of drawing & carving wax has been quite challenging. I drew & reworked the drawings for a solid week until something “clicked”. Then there was almost 3 weeks of carving these designs – usually not more than 20-30 minutes at a time, then walking away for a while and coming back to it for a fresh appraisal. Sometimes radical changes were made, seeking the right flow in the design.

I invite you to check them out in full color on my website, www.paulhapip.com, or come see them in person at one of my art fairs.



Paul at his Wax Carving Bench

Gem Facts & Fantasy

HEALING STONES: Many gems have been credited with the power either to cure or relieve certain ailments. Physicians of past centuries often recommended that the stones should be finely powdered, Mixed with fruit juice & syrup and taken internally. It was also advised that healing stones could be worn on the body.

ILLNESS	GEM
Dread	Tourmaline
Drowning (Protection against)	Garnet
Epidemics	Opal, Zircon
Evil Sorcery	Amethyst
Exorcism (Used in)	Emerald
Incontinence	Garnet
Insomnia	Amethyst, Zircon
Intoxication	Amethyst
Kidney Problems	Jade
Leprosy	Emerald
Liver Complaints	Amethyst, Ruby
Loss of Appetite	Emerald
Loss of Energy/Strength	Diamond
Melancholia	Garnet, Opal, Topaz
Mental Health	Ruby, Sapphire

(to be continued)
*Healing powers of gems is controversial, no guarantees implied
*Reproduced from *The Power of Gemstones* by Raymond J.L. Walters

VISIT ME ONLINE: WWW.PAULHAPIP.COM Now with 100 photos of gem rings and more!